

MV TEMA

GEARED MULTI-PURPOSE BOX SHAPED TWEEN DECKER



Main Particulars

BUILT 2007
IMO 9428786
FLAG Antigua & Barbuda
PORT OF REGISTRY St. John's
CALLSIGN V2CR6
CLASS Class NK
P & I Gard
IMDG / IMSBC / GRAIN FITTED? Yes / Yes / Yes
OWNERS MS Tema GmbH & Co. KG

Loading Gear

CRANES 2 x Cranes
SWL 45 mt each (combinable upto 90mt)
Situating Portside
OUTREACH 4.50 - 22 m (at 25 deg)
LUFF TIME 56 secs
SLEW SPEED 0.35 RPM
SPREADER 1 spreader (o/b)

General Dimensions

DWAT (SUMMER / WINTER) 8,269 mt / 8003 mt
DRAFT (SUMMER / WINTER) 7.00 m / 6.85 m
GT / NT 6569 / 2872
LOA 116.23 m
BEAM 18.00 m
MOULDED DEPTH 10.40 m
TPC 24.00 mt/cm (check)

Machinery

MAIN ENGINE Daihatsu 8DKM-28, 2500 kW, 750 rpm
AUXILIARY ENGINE 3 x MWM HND with each 273 kW

Hold Particulars

NUMBER OF HOLDS	2
TYPE OF HOLDS	box shaped
	No.1 narrowing fwd.
	No.2 narrowing aft
HATCH COVER TYPE	pontoon
HOLD VENTILATION	mechanical
	15 airchanges per hour (empty hold)

Deck Strength

TANKTOP	20 mt/sqm
HATCHCOVER	3,5 mt/sqm

Container

CONTAINER INTAKE	275 TEU of which 64 TEU on deck
INTAKE BASIS 14MTS	275 TEU
REEFER PLUGS	40 Sockets 32A (on deck)
STACK LOADS	hold: TEU 96 mts / FEU 122 mts
	deck: TEU 24 mts / FEU 30.5 mts

Container Lashing Material subject to re-confirmation

Hold Dimensions (m) without Tweendeck

Hold No. 1.....	27,3 x 15 x 10,48m / narrowing fwd.
Hold No. 2.....	49 x 15 x 15,4m x 10,48 / narrowing aft.

Hold Capacity (Grain/Bale) without Tweendeck

Hold No. 1.....	140,544 cbft / 140,155 cbft
Hold No. 2.....	272,929 cbft / 272,385 cbft
Total	413,473 cbft / 412,540 cbft

Hatch Openings (m)

Hold No. 1.....	25,85 x 15 m / narrowing fwd.
Hold No. 2.....	44,75 x 15 m

Tween Decks (m)

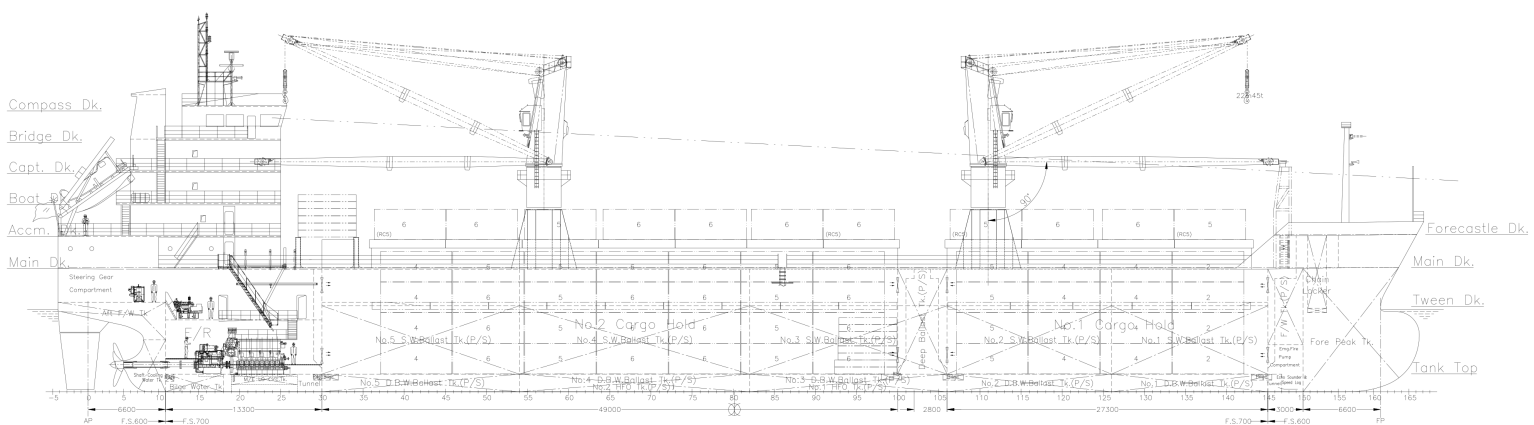
TWEEN DECKS	14 Pontoons
HEIGHT UNDER TWEENDECK	5.40 m / Hold 1 narrowing fwd
HEIGHT ABOVE TWEENDECK	4.60 m / Hold 1 narrowing fwd

SPEED & CONSUMPTION

AT SEA.....	abt 11 kn on abt 9 mts/day
	LSMGO (max 0,5% S)
IN PORT WITHOUT GEAR.....	abt 0.8 mt + 0.3 mt for boiler MGO
IN PORT WITH GEAR.....	abt 1.6 mt + 0.3 mt for boiler MGO
FUEL GRADES.....	MGO Only

Bunker specifications to be in accordance with ISO fuel standard 8217:2010 or later versions, with max 0.5% Sulphur content.

Speed and consumption figures are based on good weather conditions upto BF 3 and Douglas sea state 3 with no adverse current and no negative influence of swell, trim and water temperatures.



Candler Schiffahrt GmbH

Teerhof 42 | 28199 Bremen

Phone: +49-421-69 16 40 | E-Mail: chartering@candler.eu

www.candler.eu



All details believed to be correct, given in good faith, without guarantee and subject to reconfirmation.