

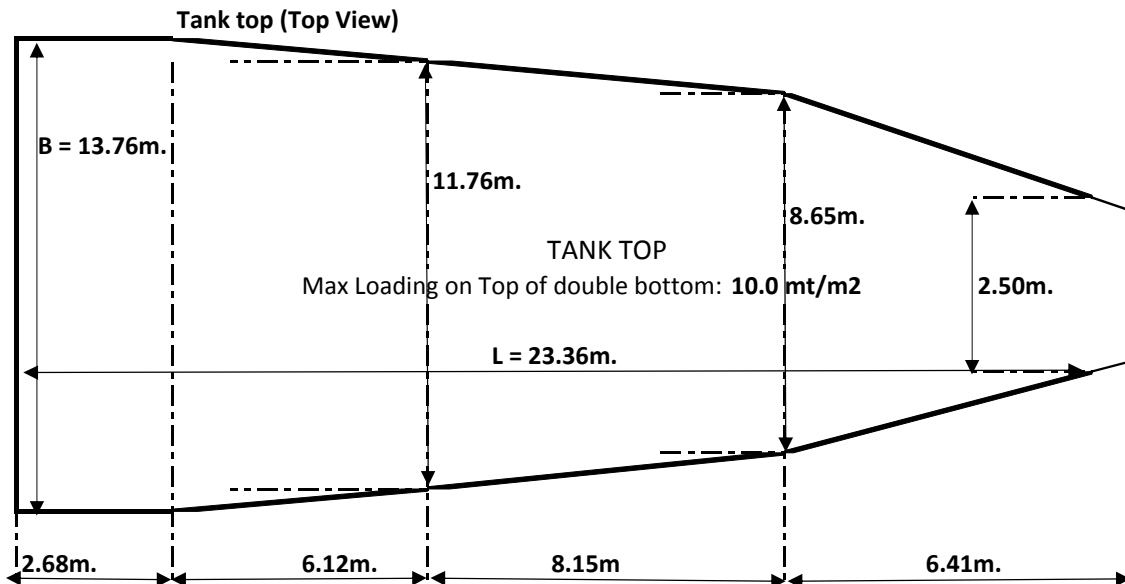
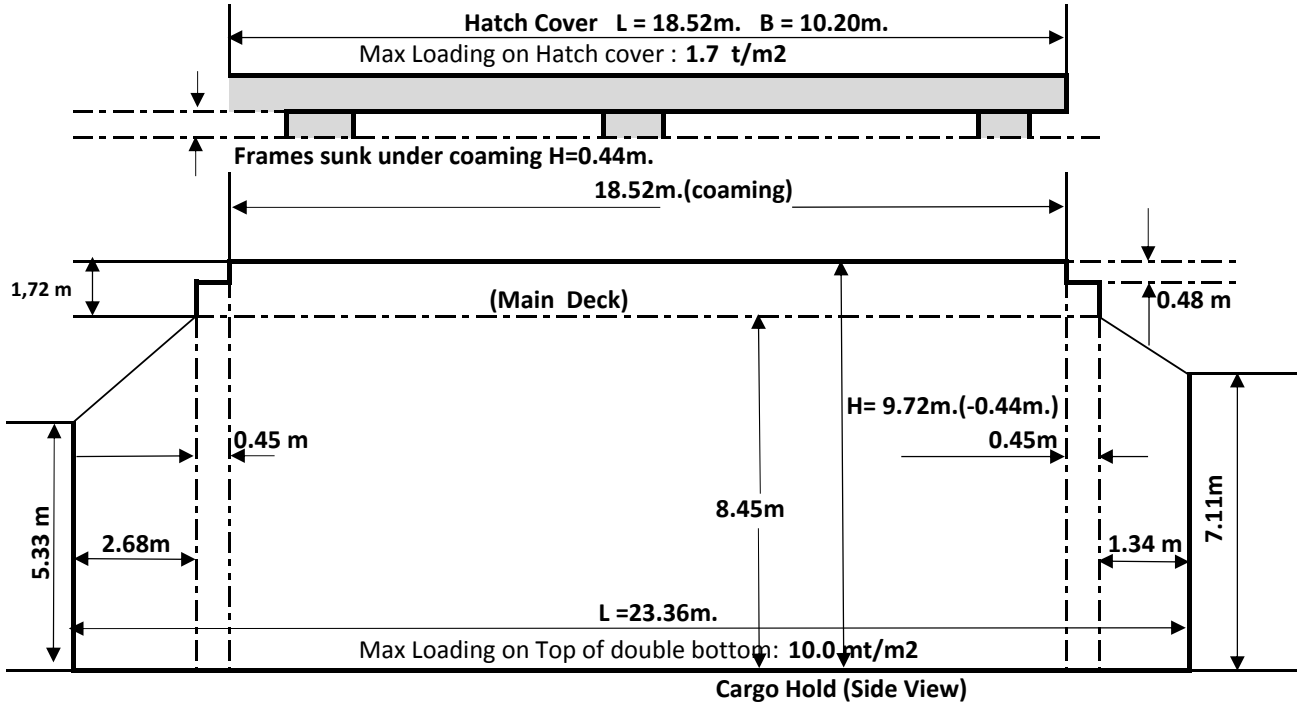
V20Y2 M/V NOTOS CARGO HOLD PLAN

Capacity	Grain	Bale
cbm.	2345,8	2251,97
cbf.	82841,15	79527,57

HOLD No 1

Permissible design loads:
 Hatch cover - 1.7 t/m²
 Inner bottom cargo space - 10.0 t/m²

General remarks:
 Dimensions as per observed.
 Capacity acc. STABILITY BOOKLET



V20Y2 M/V NOTOS CARGO HOLD PLAN

HOLD No 2

Capacity	Grain	Bale
cbm.	3996,12	3836,28
cbf.	141121.60	135476.90

Permissible design loads:

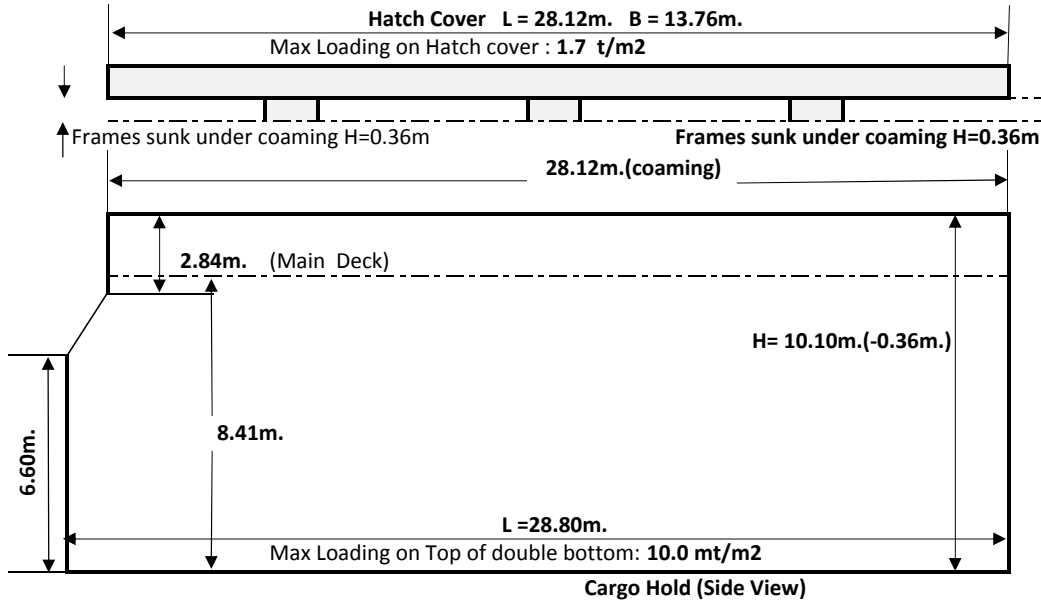
Hatch cover - 1.7 t/m²

Inner bottom cargo space - 10.0 t/m²

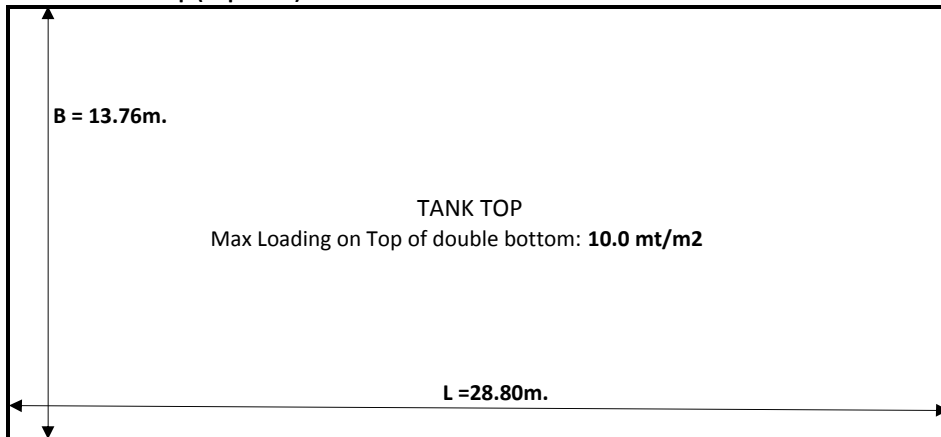
General remarks:

Dimensions as per observed.

Capacity acc. STABILITY BOOKLET



Tank top (Top View)



V20Y2 M/V NOTOS CARGO HOLD PLAN

HOLD No 3

Capacity	Grain	Bale
cbm.	3996,12	3836,28
cbf.	141121,6	135476,9

Permissible design loads:
 Hatch cover - 1.7 t/m²
 Inner bottom cargo space - 10.0 t/m²

General remarks:
 Dimensions as per observed.
 Capacity acc. STABILITY BOOKLET

